

The Good Shepherd

Courtesy of davebrodiemusic.com

Bass line by Peter Washington

F Blues

Joe Farnsworth- From "Time to Swing"

♩=140

1st Chorus

41 3 2

45

49 5th

53

57 6th

61

65

69

73 7th

77

81

85 8th



89



93



97 9th



101



105



109 10th



113



117



11th

121



125

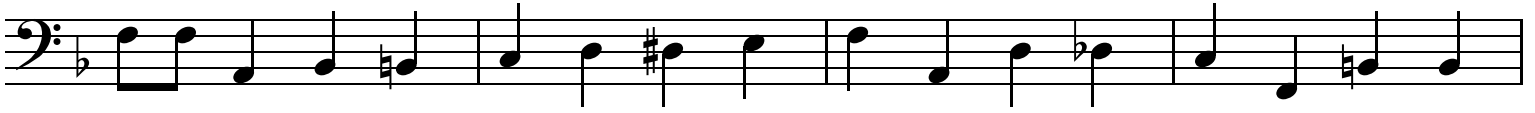


Detailed description: This image shows a page of musical notation for a bass line, spanning measures 85 to 128. The notation is written on a single staff in bass clef with a key signature of one flat (B-flat). The music is organized into systems of two staves each. Measure numbers 85, 89, 93, 97, 101, 105, 109, 113, 117, 121, and 125 are placed at the beginning of their respective systems. The notation includes various note values (quarter, eighth, and sixteenth notes), rests, and accidentals (sharps and flats). There are also triplets indicated by a '3' over a group of notes. The piece concludes with a double bar line at the end of the final system.

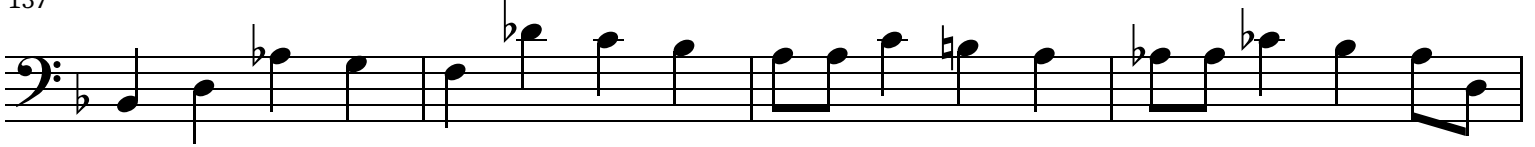
129



133 12th



137



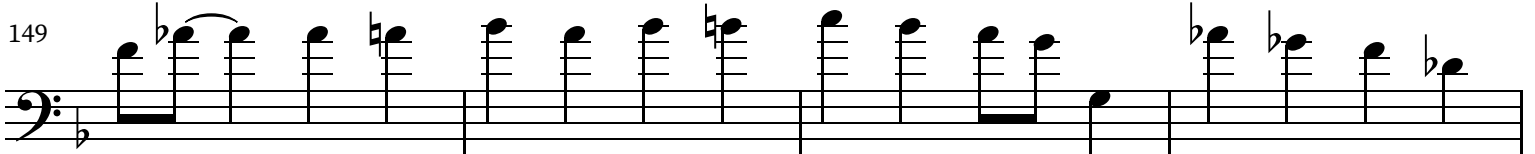
141



145 13th



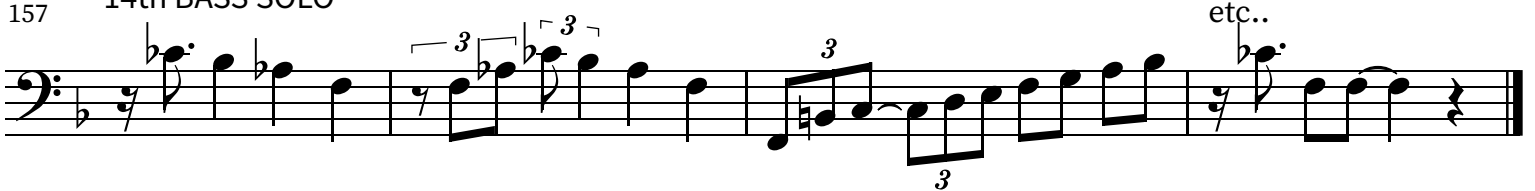
149



153



157 14th BASS SOLO



Courtesy of davebrodiemusic.com